

# Raven lace Box

## Assembly Instructions:

Cut around outside edge. Score on lines. Glue triangle tabs to adjoining box sides. Repeat with box bottom on page two.

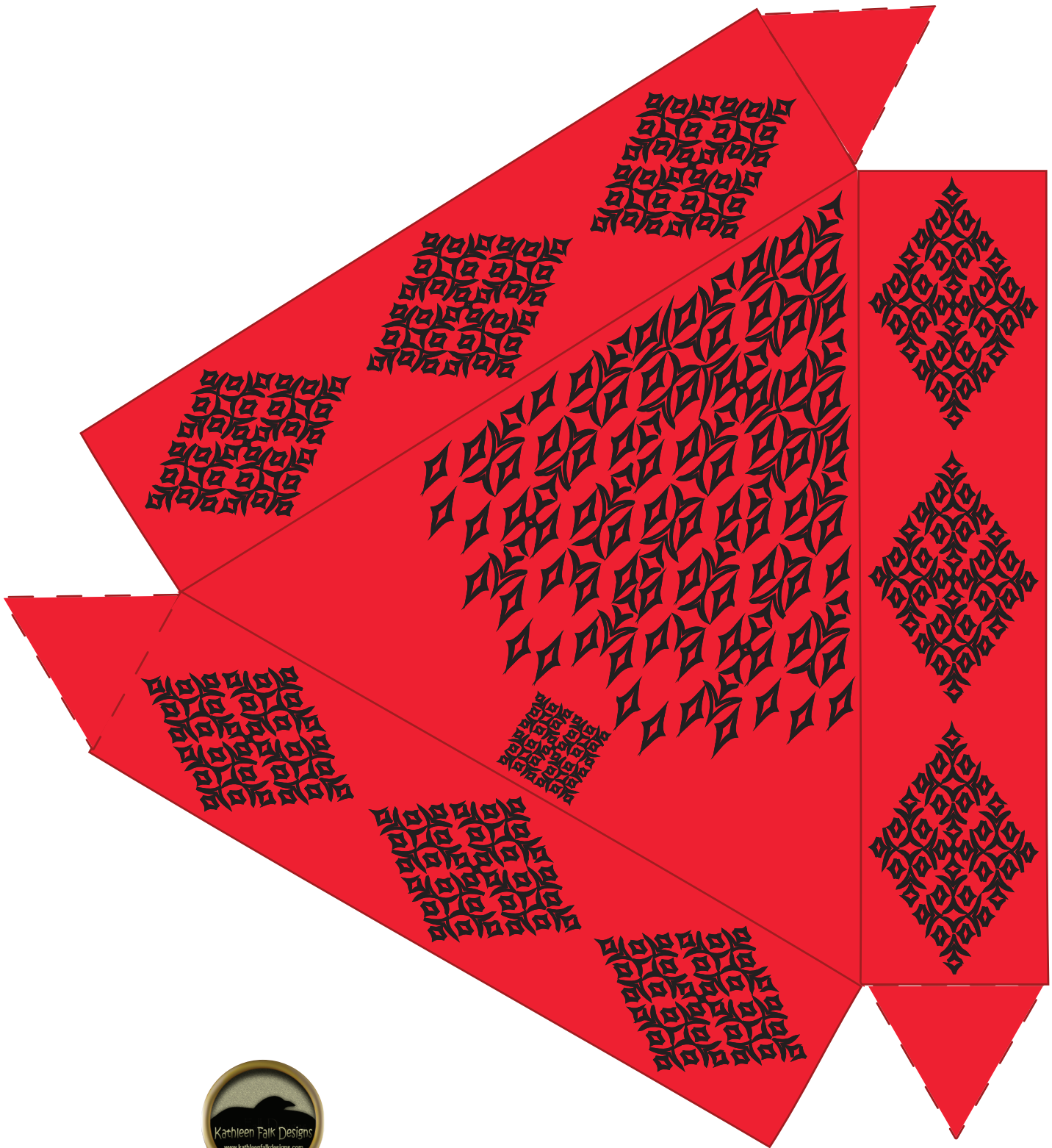


Kathleen Falk Designs

1317 South 55 Street . Omaha, NE 68106

[www.kathleenfalkdesigns.com](http://www.kathleenfalkdesigns.com) . Phone: 402.715.0444

# Raven lace Box bottom



Kathleen Falk Designs

1317 South 55 Street . Omaha, NE 68106

[www.kathleenfalkdesigns.com](http://www.kathleenfalkdesigns.com) . Phone: 402.715.0444